

Bode Conventional positioners

▲ MODEL 150.VP

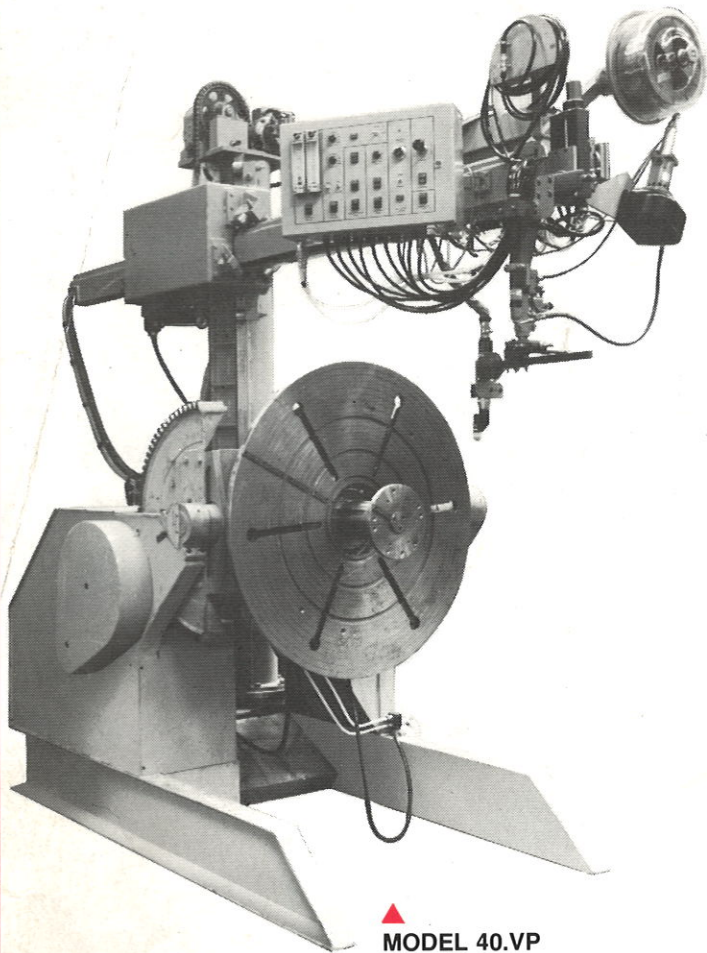
Capacity 7½ tons.

Machine equipped with cradle so that height of machine can be readily manually adjusted when handling bulky weldments.

Table equipped with detachable outriggers.

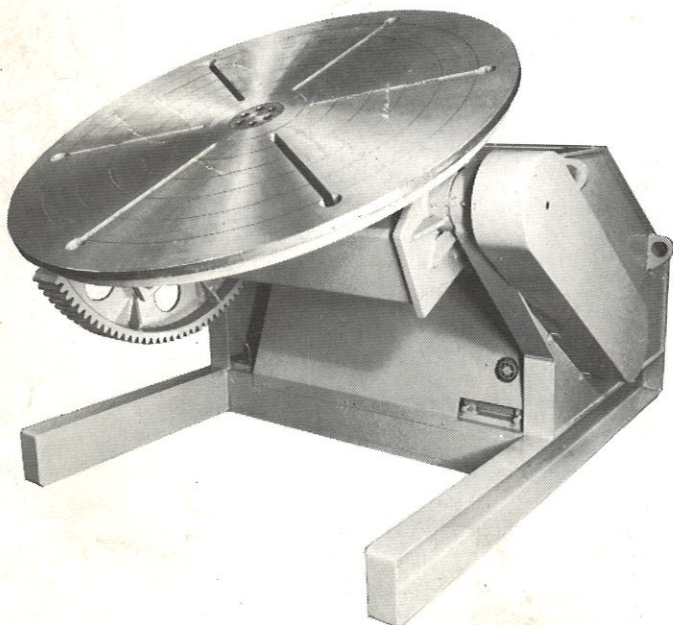
Bode Conventional Positioners provide the utmost in capacity and low cost for placing bulky fabrications in downhand position in the shortest possible time without the use of cranes and manpower.

- Robust all steel fabrication.
 - Variable or single speed table rotation through 360 degrees.
 - Two speed gearboxes, optional extra, to give wider range of rotation speed.
 - Square or round tables as desired with slots to facilitate clamping.
 - Table tilting mechanised through 135 degrees, including limit switches to prevent over-run.
 - Centre spindle carried in sealed pre-loaded Timken bearings.
 - Accurate machine cut steel gears.
 - Efficient built-in earthing.
 - Totally enclosed electric motors including electromagnetic brakes.
 - Pendant remote push button controls for all movements.
-

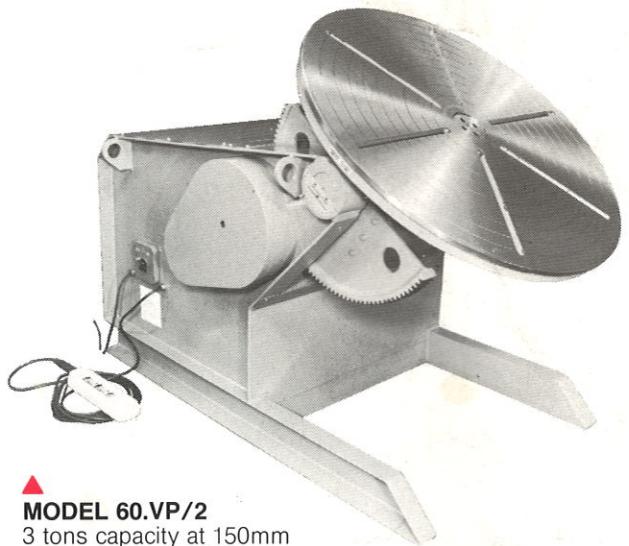


▲
**MODEL 40.VP
SPECIAL**

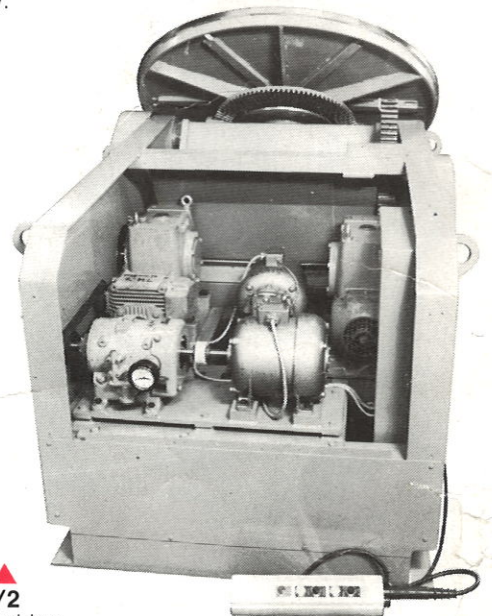
With moveable centre ram designed to support an expanding back up ring. Machine frame incorporates column and boom supporting control panel together with T.I.G. and plasma welding equipment.



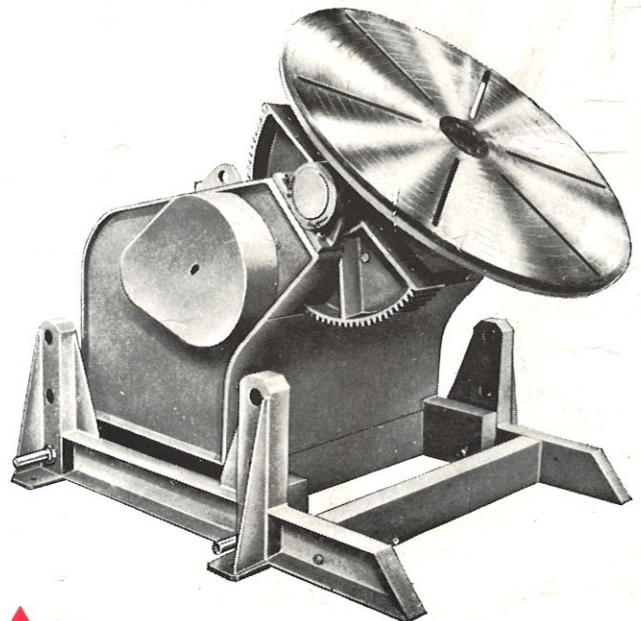
▲
MODEL 100.VP
5 tons capacity at 150mm eccentricity and 300mm centre of gravity.



▲
MODEL 60.VP/2
3 tons capacity at 150mm eccentricity and 300mm centre of gravity.

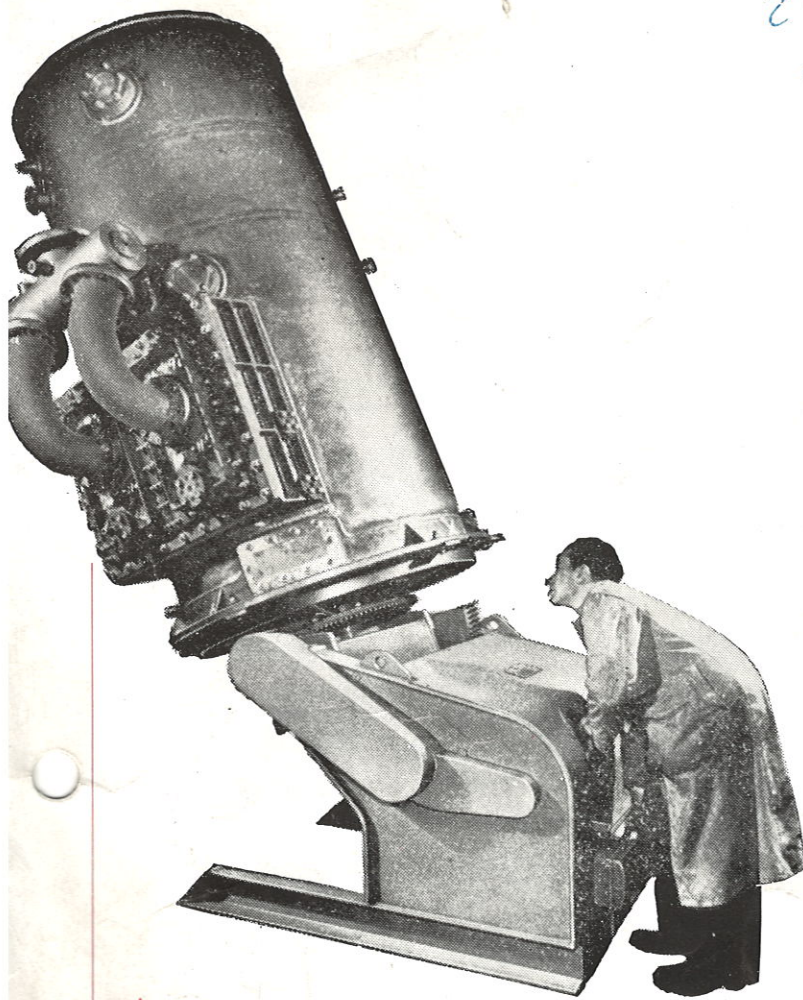


▲
MODEL 60.VP/2
Rear view of machine showing table rotation drive through hydraulic variator and table tilt drive.

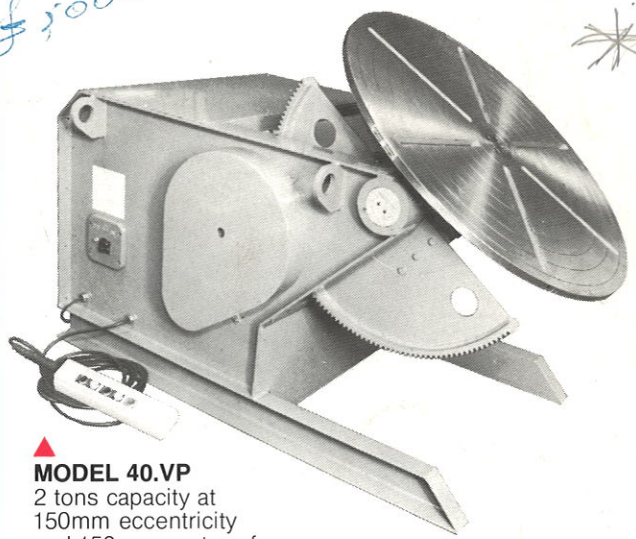


▲
MODEL 60.VP/1
3 tons capacity. Equipped with special frame for manual elevation, suitable for handling bulky weldments. Machine on the left in the lowest position. Machine on the right in the highest position.

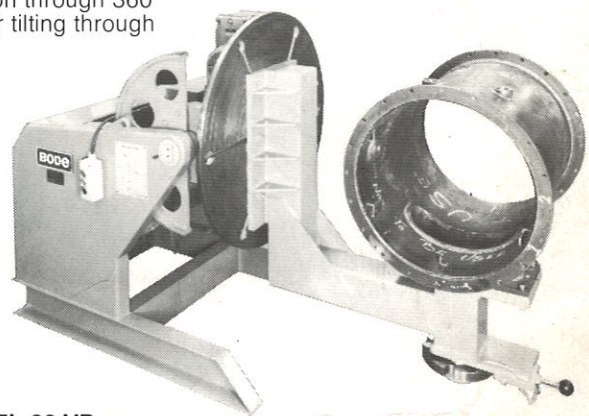
2 ton
£3000



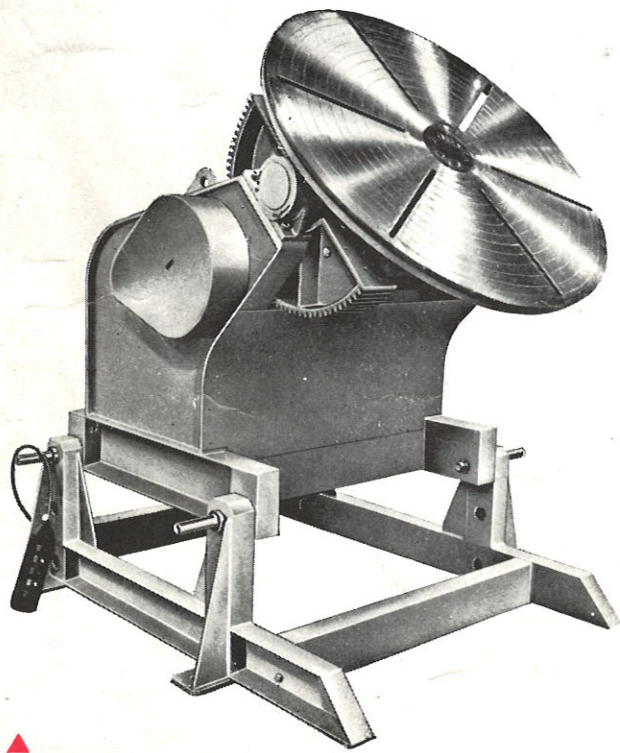
▲ **MODEL 60.VP/1**
3 tons capacity. Supporting bulky workpiece.
(by courtesy of Caird & Rayner Ltd.)



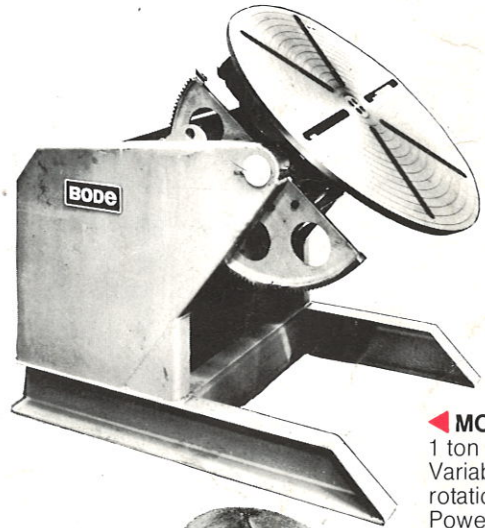
▲ **MODEL 40.VP**
2 tons capacity at
150mm eccentricity
and 150mm centre of
gravity.
Variable speed
rotation through 360°
Power tilting through
135°



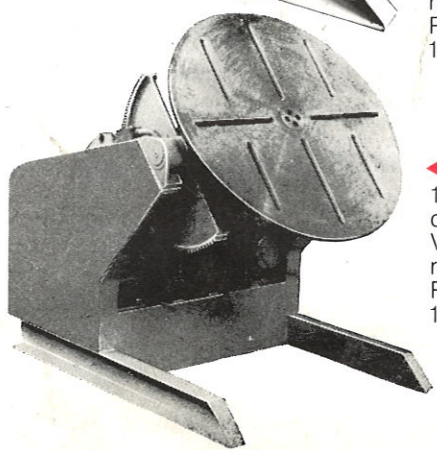
▲ **MODEL 20.VP**
Table fitted with special fixture incorporating manual indexing
feature, which permits a fabricated vessel to be rotated in a
vertical axis and tilted through 360°



▲ **MODEL 60.VP/1**
3 tons capacity. Equipped with special frame for
manual elevation, suitable for handling bulky
weldments. Machine on the left in the lowest
position. Machine on the right in the highest
position.



▲ **MODEL 20.VP**
1 ton capacity.
Variable speed
rotation through 360°
Power tilting through
135°



▲ **MODEL 10.VP**
10 cwts. (500 kgs.)
capacity.
Variable speed
rotation through 360°
Power tilting through
135°

The 2/VP/2 and 1/VP/3 are a new series Positioner introduced for precision use. The table rotation is through thyristor controlled D.C. motor, and final large diameter spur gear drive. The rotation drive is mounted on the table crosshead, and backlash is eliminated. These machines are of extremely robust construction.

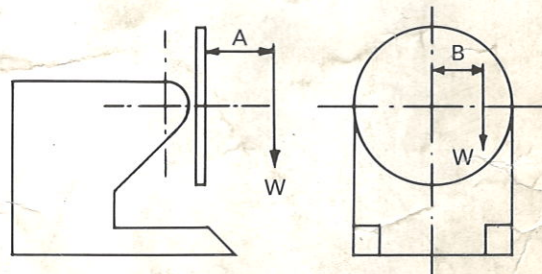
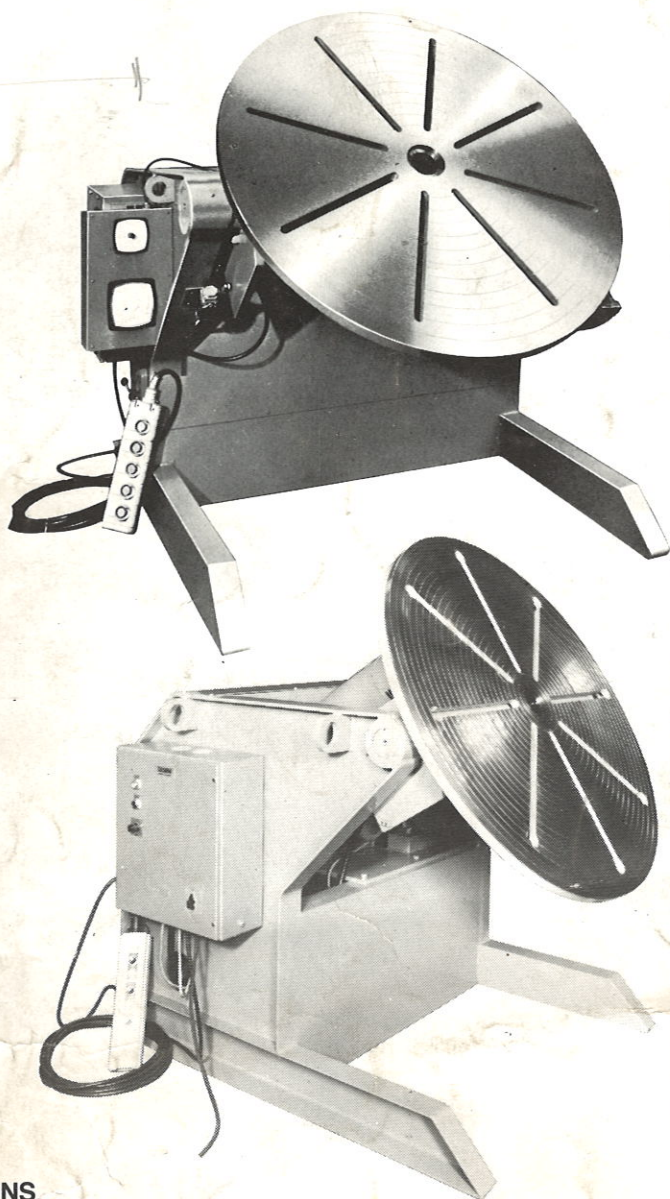
◀ **2/VP/2**

2 tons capacity, at 9" (225mm) eccentricity and 12" (300mm) centre of gravity. Thyristor controlled table rotation through 360° Power tilting through 135°

This machine is fitted with a diameter selector enabling the operator to adjust the table speed to suit the diameter of the workpiece without any onerous calculations.

◀ **MODEL 1/VP/3**

3 tons capacity at 150mm eccentricity and 150mm centre of gravity.



SPECIFICATIONS

Model		5VH	10VH	10VP	20VH	20VP	40VP	60VP/1	60VP/2	100VP	150VP
Rated Load Capacity	'W' (lbs)	560	1120	1120	2240	2240	4480	6720	6720	11200	16800
	(Kgs)	250	500	500	1000	1000	2000	3000	3000	5000	7500
Rated Centre of Gravity	'A' (mm)	150	150	150	150	150	150	150	300	300	300
Rated Eccentricity	'B' (mm)	150	150	150	150	150	150	150	150	150	150
Table Speed R.P.M.	Min.	0.07	0.07	0.07	0.07	0.07	0.036	0.036	0.036	0.036	0.036
	Max.	1.40	1.40	1.40	1.40	1.40	1.00	1.00	1.00	1.00	1.00
Degree of Rotation		360	360	360	360	360	360	360	360	360	360
Tilt Speed	(Seconds per 135°)	Hand	Hand	30	Hand	33	36	42	42	60	62
Degree of Table Tilt		135	135	135	135	135	135	135	135	135	135
Table Diameter	(mm)	610	915	915	915	915	1070	1220	1220	1525	1525
Overall Height Table Level	(mm)	900	1000	1000	1000	1000	980	1200	1200	1200	1470
Overall Height to Trunnions	(mm)	800	850	850	850	850	830	1000	1000	950	1220
Overall Length	(mm)	1150	1350	1350	1310	1310	1800	1970	1970	2300	2500
Overall Width	(mm)	650	915	915	1070	1070	1120	1300	1300	1750	1750
Rotation Motor	(Kw)	0.18	0.18	0.18	0.37	0.37	1.1	1.1	1.1	1.5	2.2
Tilt Motor	(Kw)	Hand	Hand	0.37	Hand	0.75	1.1	1.5	2.2	2.2	3.0
Approx. Shipping Wt. Nett	(Kgs)	280	440	450	760	770	1220	1470	1650	2250	3300
Approx. Shipping Wt. Gross	(Kgs)	330	500	510	825	835	1300	1570	1780	2350	3400
Maximum Load at Centre of Gravity 'A'	'A'(Kgs)	<u>62500</u>	<u>150000</u>	<u>150000</u>	<u>300000</u>	<u>300000</u>	<u>600000</u>	<u>1050000</u>	<u>1500000</u>	<u>2750000</u>	<u>4155000</u>
		A+100	A+150	A+150	A+150	A+150	A+150	A+200	A+200	A+250	A+250
Maximum Load at Eccentricity 'B'	(Kgs)	<u>37500</u>	<u>75000</u>	<u>75000</u>	<u>150000</u>	<u>150000</u>	<u>300000</u>	<u>450000</u>	<u>450000</u>	<u>750000</u>	<u>1125000</u>
		B	B	B	B	B	B	B	B	B	B



F. Bode & Son Ltd.,
 Ball Haye Green, Leek, Staffs. ST13 6BW.
 Tel: 0538-383451. Telex: 36497
 Grams: Bode, Leek, Staffs.